



March 1, 2018

## The Union Dollar News March 2018

**Greetings!**

**Last chance on our NO FEE balance transfer on our low-rate VISA card!**

Transfer your debt to a money-saving VISA card with IBEW 26 FCU and SAVE!

- Make one easy payment
- No minimum credit score required
- Same low rate for purchases, balance transfers, and cash advantages
- No annual fee
- Offer good January 1, 2018 - March 30, 2018

[Apply NOW](#) for your credit union VISA card, offered at three rates:

7.25%, 11.25%, 18% APR\*

Transfer your balance and pay off your other cards today! **Act now--transfers need to be completed by March 30, 2018.**

\*APR = Annual Percentage Rate. Actual rate based on creditworthiness. members approved for Platinum Visa Credit Card will receive one of these

### We Love to Make Loans!

- Low payments on payroll deduction
- Great rates based on your credit score
- No minimum credit score required
- We work with your credit problems

[Apply now for a loan!](#)

### Open Your Account Today!

Say goodbye to your bank and hello to a better way of managing your finances. Anyone working through these unions are eligible to open a share account.

- IBEW Local 26
- IBEW Local 70
- IUEC Local 10
- SMW Local 100
- Heat & Frost Insulators, and Asbestos Workers Local 24

Contractors with these unions, their office employees, and family members can also open accounts.

### Contact Us

4371 Parliament Place, Suite C  
Lanham, MD 20706

[www.ibew26fcu.com](http://www.ibew26fcu.com)

Local phone: 301-306-0610  
Toll free: 888-306-0610  
Audio response: 800-724-7573  
Email: [information@ibew26fcu.com](mailto:information@ibew26fcu.com)

Office Hours:  
Monday - Friday 8:30am to 4:00pm

Join Our Mailing List!

Forward to a Friend

[Apply now for a credit card!](#)

rates. This APR will vary with the market based on the Prime rate.

---

### Financial Seminar

Join us for an upcoming financial seminar covering home buying and retirement planning on Saturday, April 14th from 11am - 2pm. [Click here](#) for more information.

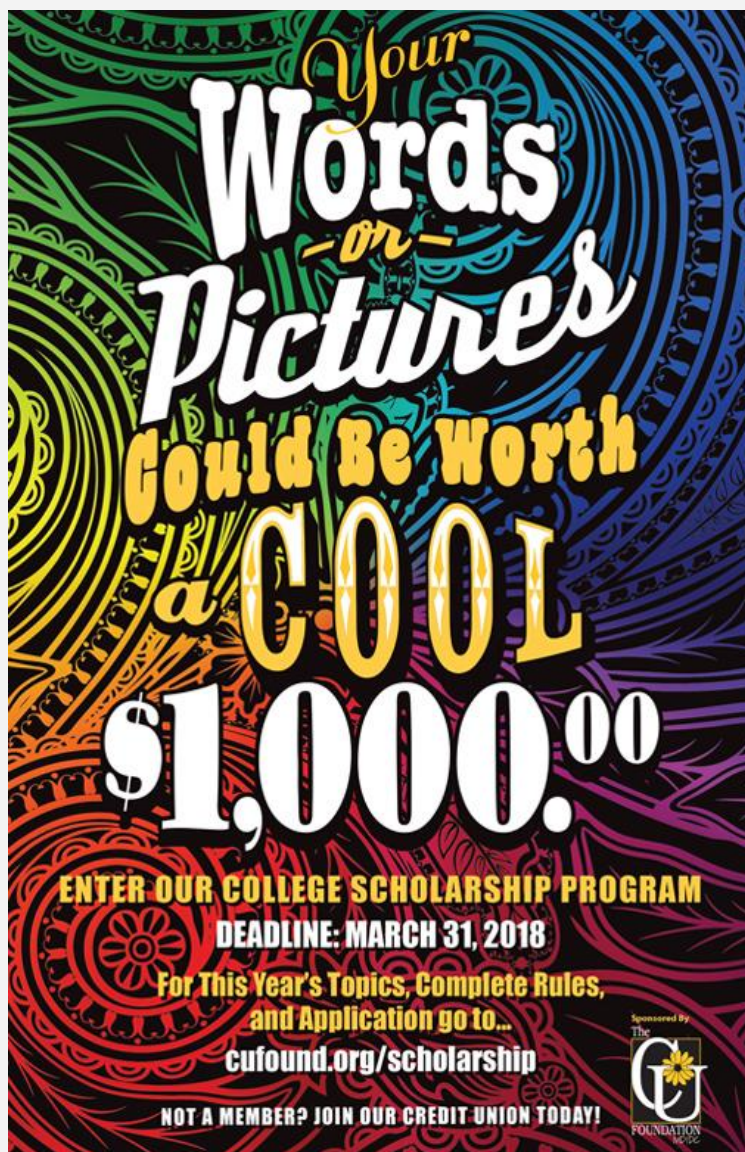
---

### 2018 Annual Meeting

Our Annual Meeting will be held on Tuesday, April 24, 2018 at 4:30 p.m. at our Lanham branch located at 4371 Parliament Place, Lanham, MD 20706. Refreshments will be served. Please RSVP by Tuesday, April 17, 2017 if you plan to attend. As a member of IBEW 26 FCU, you own a portion of the Credit Union. Your share savings account qualifies you as a member-owner of the Credit Union and entitles you to vote for the individuals you would like to have represent you on the Board of Directors.

Visit our website for more information [click here!](#)

---



Are you headed off to college or trade school in 2018? Well, IBEW 26 FCU is pleased to announce a college scholarship opportunity to make it easier for you to meet tuition costs. The \$12,000 Credit Union College Scholarship Program for 2018 is underway now! College-bound members are eligible to apply for one of ten \$1,000 essay-based scholarships - one \$1,000

video-based scholarship; and one \$1,000 photo-based scholarship. And, yes, you may apply in all three categories!

**Deadline for applications is March 31, 2018.**

Scholarship winners will be announced in April 2018 on the Credit Union Foundation MD|DC's scholarship website: [www.cufound.org/scholarship](http://www.cufound.org/scholarship).

---



Keep tabs on your debit card with CardValet® alerts sent to your mobile device.



CardValet

[LEARN MORE](#)

Thank you for your continued support!

Sincerely,  
Doreen Cleland  
CEO